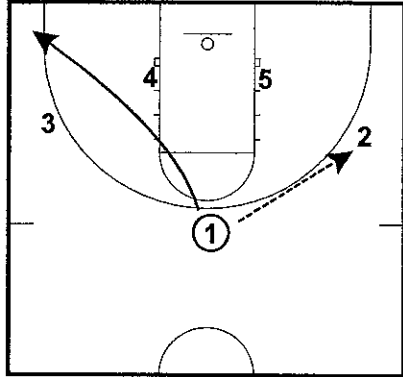
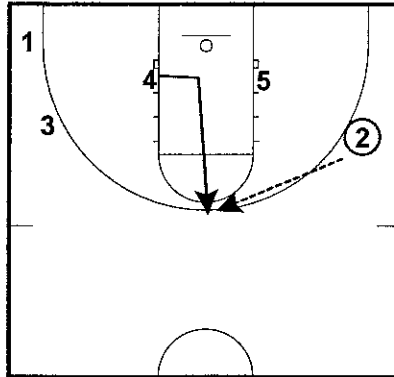


High-Low (1 of 6)

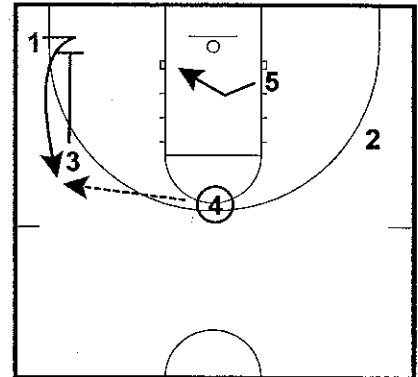


High-Low (2 of 6)



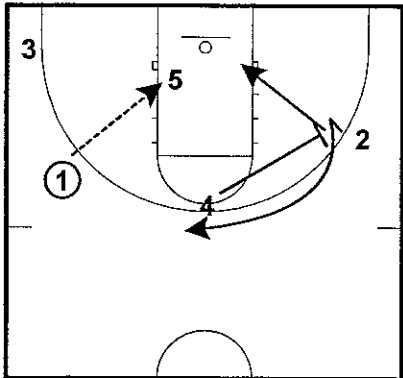
Big step across defense's body, then pop - inside pivot!

High-Low (3 of 6)



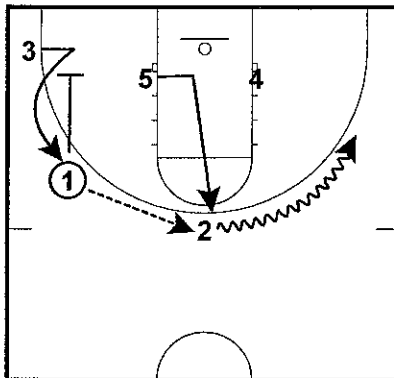
On initial post, take how defense plays and hold it - 1 get out to 3 after screen

High-Low (4 of 6)



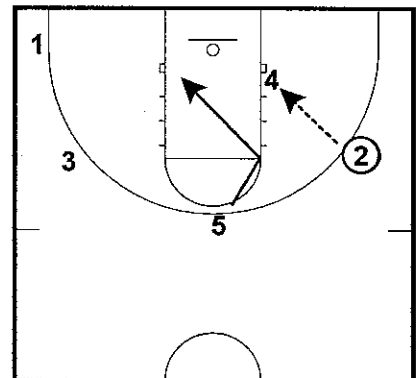
Look for slip, look to throw over top

High-Low (5 of 6)



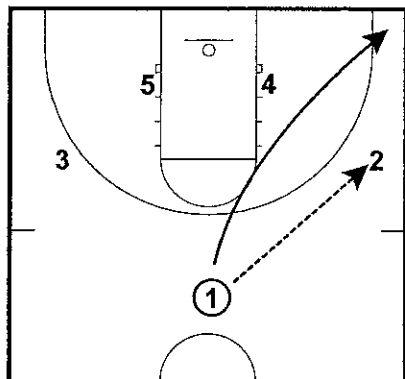
On swing, wing rip back

High-Low (6 of 6)

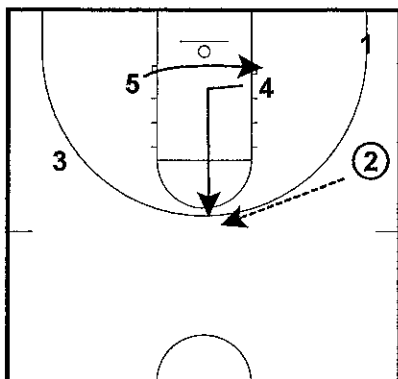


On post feed - if double other than post to elbow then dive

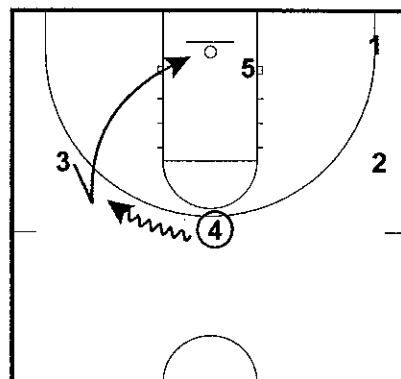
High-Low Backdoor (1 of 6)



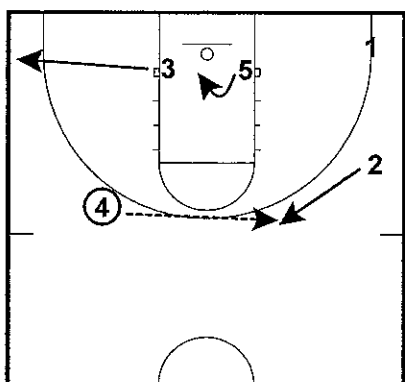
High-Low Backdoor (2 of 6)



High-Low Backdoor (3 of 6)

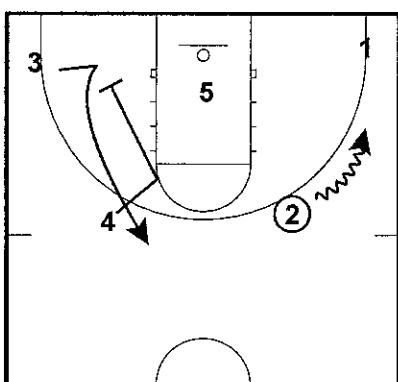


High-Low Backdoor (4 of 6)



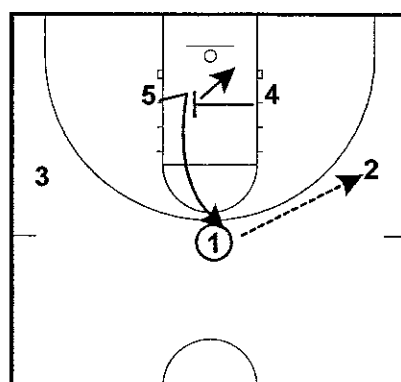
If no back-door, throw behind and duck-in

High-Low Backdoor (5 of 6)



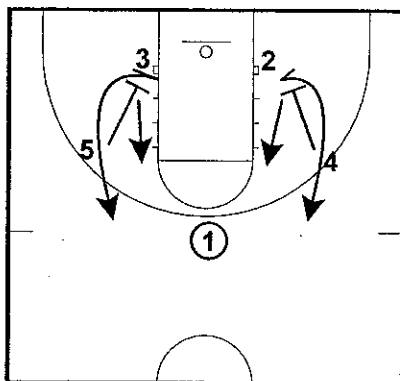
Into action

High-Low Backdoor (6 of 6)



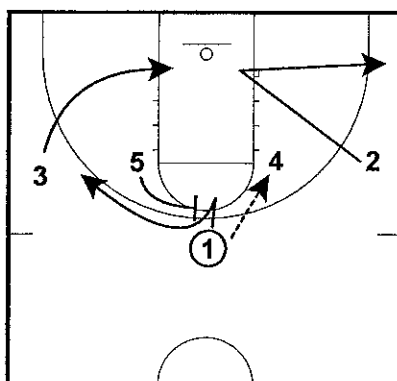
Vs. Switch: move post to mid-post

High-Low vs. pressure (1 of 6)



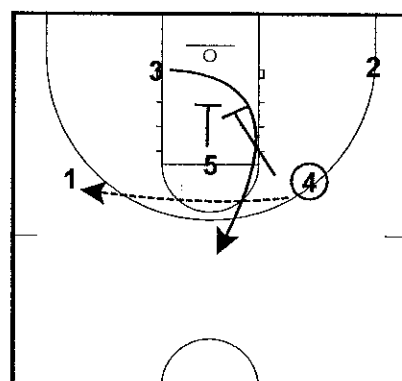
Any time bigs pin-in they pop to high post

High-Low vs. pressure (2 of 6)

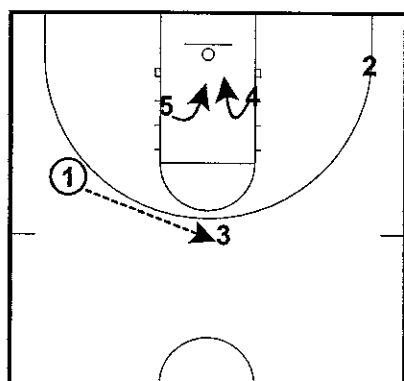


Dribble-entry

High-Low vs. pressure (3 of 6)

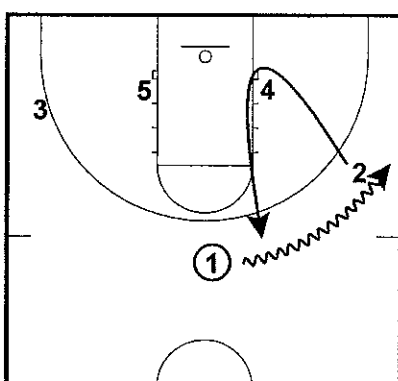


High-Low vs. pressure (4 of 6)



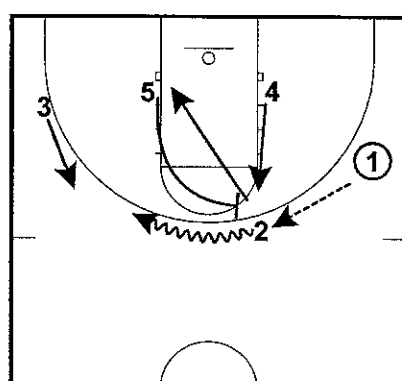
On catch both bigs duck-in

High-Low vs. pressure (5 of 6)



4 ducks-in; 2 must catch outside lane

High-Low vs. pressure (6 of 6)



P&R & replace